

## MSizer extend

The new dimension of screening



**INNOVATION**

## MSizer extend – The new dimension of screening

### **Economical – efficient – environmentally friendly**

With the new MSizer extend, the Allgaier-Group ushers bulk material screening into a new era.

The MSizer extend is based on the same Sizer principle developed and proven by Fredrik Mogensen more than five decades ago. The MSizer extend combines state-of-the-art technology with decades of extensive knowledge and expertise.

The result is an even more accurate screening process with increased throughput in a smaller footprint.

### **High efficiency with significantly reduced operating costs:**

- up to 20% reduced energy consumption
- shorter set-up times
- simple screen replacement requiring only one person
- outstanding price/performance ratio

### **Maximum plant availability:**

- EasyMount with non-confusable assembly coding – quick change of attached components such as motors
- automatically adapted screen tension
- maximum operational safety by FEM-optimized, heavy-duty construction
- long-term testing under maximum load
- in-line visual check of the screening process

### **Extensive accessory:**

- vibratory machine monitoring
- extensive, specific screen cleaning possibilities, e.g. various mechanical screen cleaning devices, pneumatic screen tensioning and screen deck heating

### **Adaptation to your needs:**

- optimized hexagonal outlet hoods
- fail-safe plug interface for motor connection
- standardized transport dimension, standard container up to 2 m machine width
- perfectly integrated with the entire Allgaier portfolio



View MSizer extend, hexagonal outlet hoods

## MSizer extend – The new Sizer principle

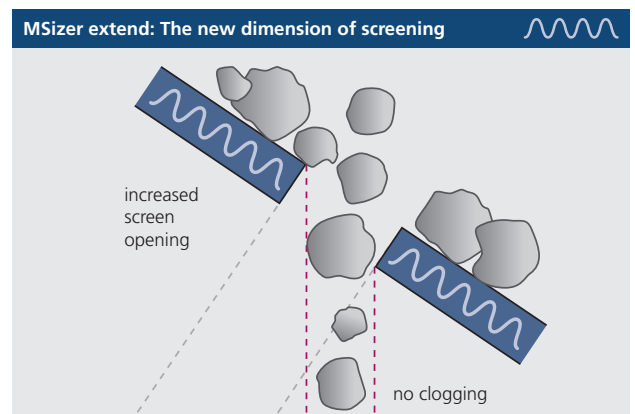
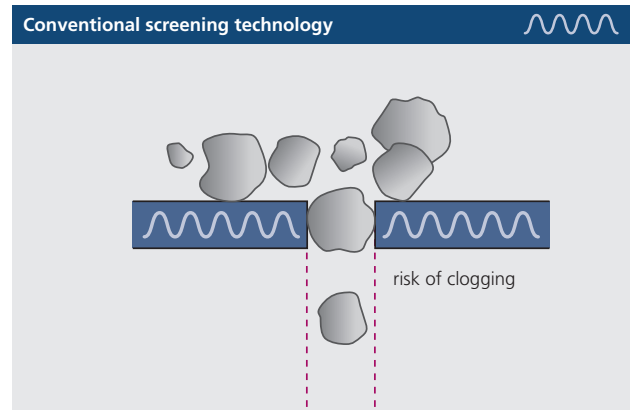
The MSizer extend is the most powerful and versatile classifier machine according to the Sizer principle. The machine combines economic and operating efficiency benefiting from a new screen deck concept with a modified angle of inclination of the screens. The two to six screen decks of the MSizer extend considerably reduce screen replacement times thanks to the fast screen changing mechanism.

The MSizer screen decks move in a linear oscillation pattern in the newly designed compact housing using vibration motors or exciters. With the precisely adapted oscillation range, the fine grain of the feed material quickly flows, almost vertically downwards, while the coarse grains are efficiently screened from the material stream.

Clogging is effectively eliminated with a significantly increased throughput. Unlike conventional flat screens, the mesh sizes of the MSizer extend are designed to be larger due to the optimized screen inclination which promotes superior grading quality. The increased mesh size – compared to the separating cut – counteracts the formation of material layers and clogging, leading to a significantly higher throughput and service life of the screen linings.

### Your advantages:

- highest economic efficiency
- increased material throughput with small space requirement
- high grading quality for perfect process results
- fully integrated with the entire Allgaier portfolio

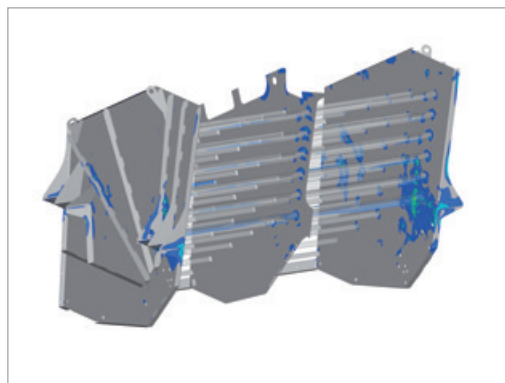


Sophisticated and proven Sizer technology in industrial applications

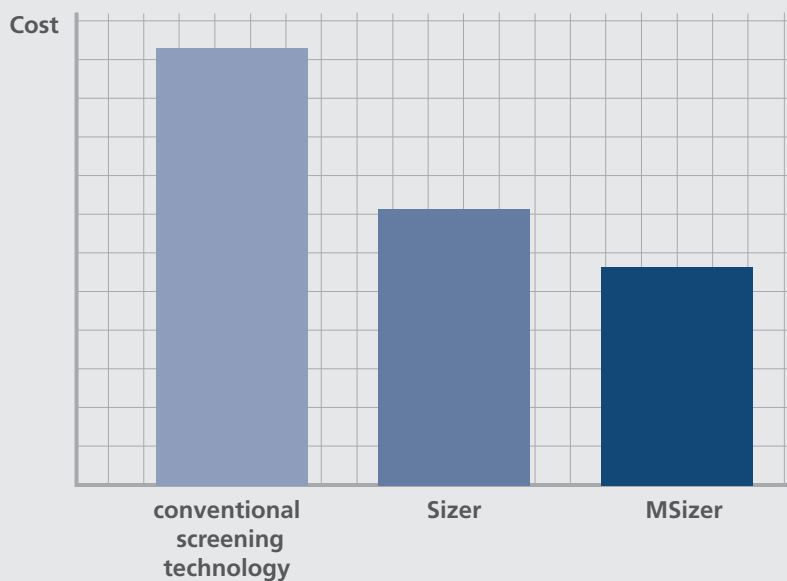
## The Mogensen Sizer principle newly defined with modern methods

For the development of the new MSizer extend, the latest development methods have been used to optimize the design. A complete finite element analysis of all structural obstacles were simulated with virtual prototypes and thoroughly tested while under continuous operation.

The MSizer extend is the new generation of Sizer that drastically minimizes the risk of failure, ensuring safe and trouble-free production in all areas of operation.



FEM optimized design



MSizer extend: Cost-minimized new development



# MSizer extend in operation

## Economical – efficient – environmentally friendly

MSizer can be used in almost all industrial sectors. Decades of Sizer experience, in combination with the new features of MSizer extend, ensure long-term confidence in your investment.

### The correct size for your application

MSizer extend, with screen lengths up to 2.4 m and machine widths between 1 m and 3 m allow for the ideal configuration for every application.

The machine size depends on the type of infeed material, the desired grain sizes and the process-related feed rate.

Due to the multideck construction, the machine sizes are significantly smaller than in conventional screening machines.

### MSizer extend features:

design..... L  
movement..... linear  
effective screen length..... 2.4 m  
screen deck width..... 1.0/1.5/2.0/3.0 m  
number of screen decks..... max. 6  
number of motors..... 2

### Your advantages:

- very compact design size
- high process flexibility
- simple and safe handling
- high availability
- innovative accessory

### Options:

- vibratory machine monitoring
- ATEX design
- extensive, specific screen cleaning possibilities, e.g. various mechanical screen cleaning devices, pneumatic screen tensioning and screen deck heating
- electronic screen tension monitoring



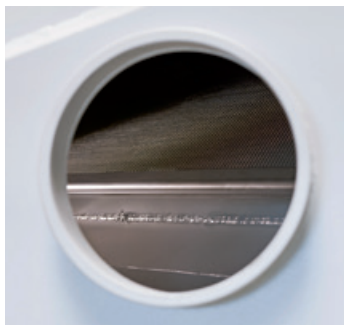
Screen tensioning unit



Unbalanced exciter



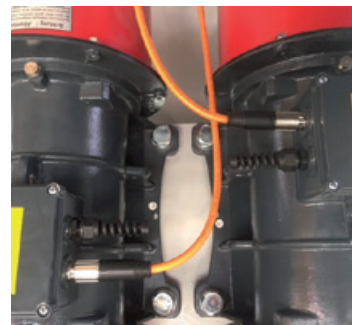
Optimized outlets



In-line visual check



Superior manufacturing quality



Non-confusable motor connection

## Unlimited application range

### Stones and soil

- sand
- stone chips
- gravel
- stones
- soil
- bauxite
- basalt
- lime stone
- magnesite
- dolomite

### Metallurgy

- iron ore, nickel ore, manganese ore
- aluminum oxide
- slag

### Ceramics

- ceramic
- magnesite quartz
- salts

### Wood/particle boards

- wood chips
- wood flour/wood powder

### Chemicals

- fertilizer
- solid chemical products
- silicon carbide
- titanium dioxide
- zinc oxide
- cupric sulfate

### Waste/recycling

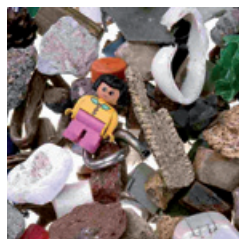
- glass
- household waste
- plastic recycling
- pellets (biofuel)

### Foodstuffs

- sugar
- animal foodstuff
- hazelnuts
- cocoa beans
- milk powder

### Others

- coal (anthracite)
  - cement (gypsum)
  - coke/charcoal
  - clay
  - chalk
  - bone meal
  - fish meal
  - fly ash
  - cork
  - asphalt pieces
  - tobacco
  - silica gel
  - sea salt
- and many other solid bulk materials.



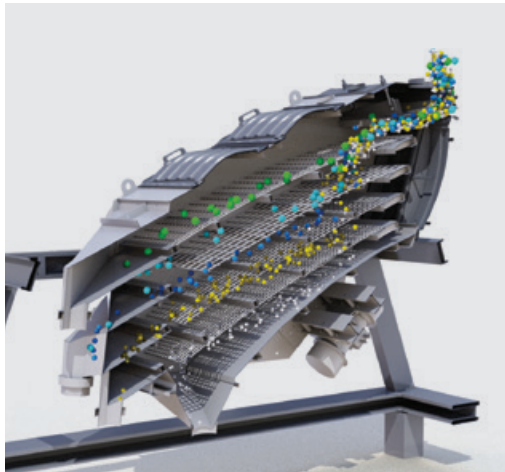
## Convince yourself – during your test screening in our technical center

Convince yourself of the quality and the advantages of the new MSizer extend in our technical center in Wedel.

You will not only get to know the MSizer extend capabilities related to your products, but we also accompany you in the smooth implementation of the MSizer into your planned processes and in the integration into existing systems.

With more than 50 years experience we are gladly at your disposal and look forward to welcoming you to our technical centers.

Convince yourself of the new MSizer extend – we are pleased about your visit.



Efficient Sizer principle



Easy to maintain screen replacement



MSizer extend short before use

# ALLGAIER

Allgaier-Group

## ALLGAIER Process Technology GmbH

Ulmer Str. 75  
73066 Uhingen  
Germany  
Phone: +49 7161 301-175  
Fax: +49 7161 34268  
process-technology@allgaier.de



**ALLGAIER**  
PROCESS TECHNOLOGY

## Mogensen GmbH & Co. KG

Kronskamp 126  
22880 Wedel  
Germany  
Phone: +49 4103 8042-0  
Fax: +49 4103 8042-40  
info@mogensen.de

**MOGENSEN**

## Fredrik Mogensen AB

Sveavägen 26  
54421 Hjo  
Sweden  
Phone: +46 503 323 40  
Fax: +46 503 13878  
info@mogensen.se

 **MOGENSEN**

## Allgaier Mogensen S.A.U.

C/ Téllez, 24 - Oficina 4A  
28007 Madrid  
Spain  
Phone: +34 91 5776277  
Fax: +34 91 5757495  
info@almo.es

**GOSAG**

**ALMO**  
Allgaier Mogensen

## Allgaier Process Technology, Inc.

Ohio Office:  
8849 Brookside Ave., Suite 101 | West Chester, Ohio | 45069 USA  
Utah Office:  
942 E North Union Ave., Suite A201 | Midvale, UT | 84047 USA  
Phone: +1 513 453 6990  
www.allgaierprocess.com  
info@allgaierprocess.com

**ALLGAIER**  
PROCESS TECHNOLOGY



[www.allgaier-process-technology.com](http://www.allgaier-process-technology.com)